

Installing Stocker WMS

Table of Contents

Installing Stocker WMS.....	1
Introduction.....	2
SQL Express Operating System & Hardware Requirements.....	2
Software Prerequisites	3
Installing SQL Server 2005 and Stocker WMS.....	4
Running The Installer.....	4
Installing Stocker WMS and Restoring the Training Database.....	12
Running The Installer.....	12

Introduction

This document explains how to install the Stocker Warehouse Management System when using the Stocker WMS installer which incorporates the option to install Microsoft's SQL Server 2005 Express edition. This installer can also be used to install Stocker WMS on its own and omit the installation of SQL Server Express.

However, if you only want to install Stocker WMS (because you already have SQL Server Express) you should download the separate installer that does not contain SQL Server Express – it is a far smaller download approx 5MB.

The installer demonstrated in this document is for the Stocker Third Party Warehouse System but the instructions outlined apply equally to the Owner Warehouse system.

Note SQL Server must be installed under an administrator account. That is, the user installing SQL Server must be logged into the computer as an administrator. This installer also asks to install the SQL Server service to run under an administrator account – and suggests the account of the user running this setup. The reason for this is there have been some problems on Windows 7 systems where the service has not been able to create the physical files to hold the database, due to the service not having sufficient privileges under the default network account.

SQL Express Operating System & Hardware Requirements

This installer will install the following components of SQL Server 2005 Express.

- SQL Engine including Replication and FullText components
- SQL Server Management Tools (Management Studio) – Basic

This installer does not install the Advanced Services component. The following table provides an overview of the operating system and hardware requirements for SQL Server Express.

Operating System	Windows 2000 Service Pack 4, Windows 7, Windows Server 2003, Windows Server 2005, Windows Server 2005 R2, Windows Vista, XP
Processor	Computer with Intel or compatible Pentium III 500 MHz or faster processor (1 GHz or faster is recommended.)
RAM	Minimum of 192 MB of RAM (512 MB or more is recommended.)
Hard Disk Space	600 MB of available hard disk space for a full install. Considerably less as the Stocker setup only installs a database engine – no management tools

Table 1 – Requirements

Software Prerequisites

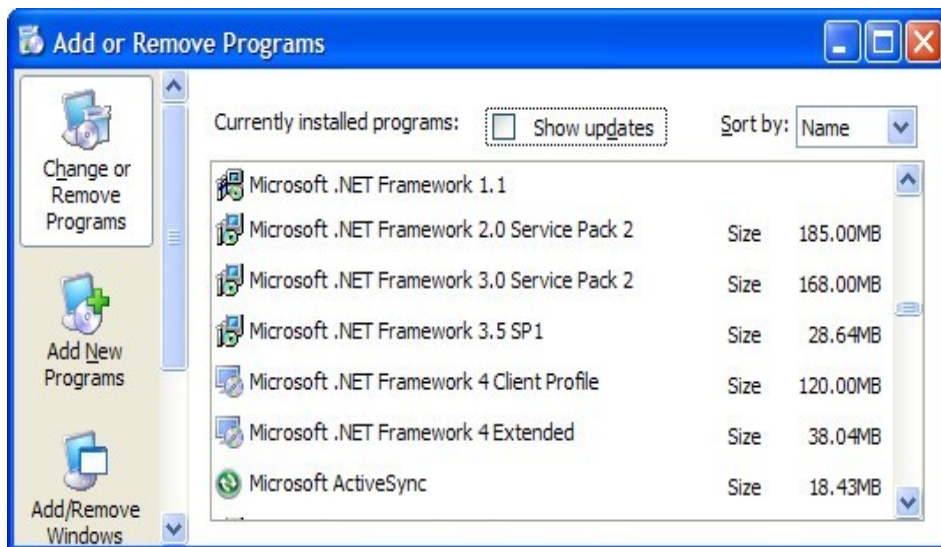
There are some software prerequisites for SQL Server Express. This is software which must be installed on the computer before you can successfully install SQL Server Express. You need to install these components manually **before** you can successfully run this installation program. The prerequisites are listed in table 2.

Edition	Prerequisites	Web Link
SQL Server Express with Management Tools	Microsoft .NET Framework 2.0 or later	Get form Web

Table 2 – Prerequisites

Please note the Stoker WMS installer does not check for the existence of this software. You must do this yourself manually as outlined below.

- .NET Framework 2 – This is the minimum version of the .Net Framework which must be present and may well already be installed. To view if you have the .Net Framework go to Control Panel->Add Remove Programs and see if it is listed.



Please note the Stoker WMS installer does not check for the existence of this software. You must do this yourself manually before attempting to run the Stoker WMS installer.

Installing SQL Server 2005 and Stocker WMS

This installation program has been designed for simplicity and flexibility. The installer provides default values for all but one entry. The only entry you must provide is the password for the currently logged in user on screen 5. All other entries can be left as provided. The installer can be used to:

- Install SQL Server 2005 Express and Stocker WMS
- Install Stocker WMS only
- Create the Stocker WMS training database in SQL Server Express.

The installation/setup program will always install Stocker WMS. It will also always attempt to install the training database so you can run this installer multiple times to restore the database after the initial SQL Server install.

Before running this installer you must:

- **Run this installer on the computer you want to install SQL Server Express**
- **Log into that computer using an administrator account.**

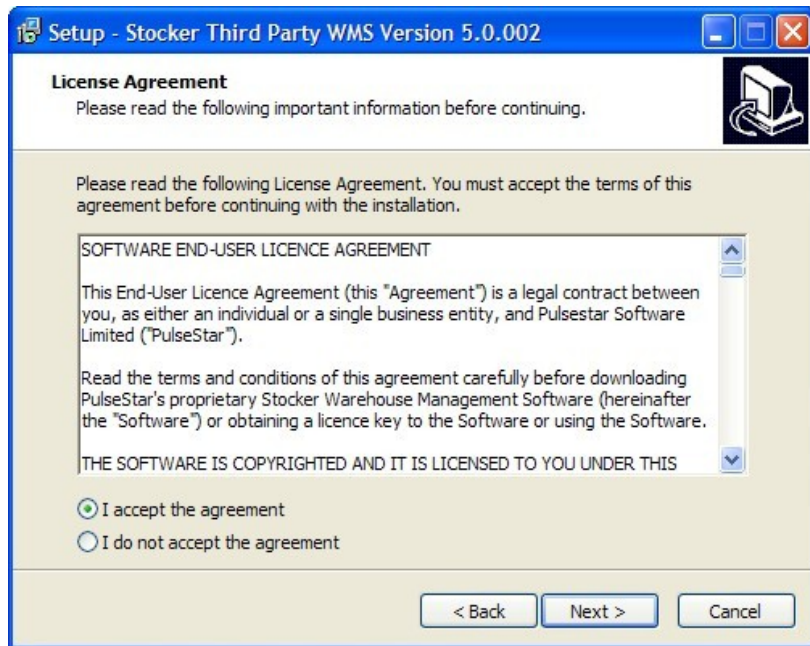
Running The Installer

Launch the setup program. There may be a small delay after you launch the program and before the initial screen is displayed. This is not a problem. The delay is because the first thing the installer does is extract the compressed SQL Server Express package from the installer and into a temporary folder. Once the SQL Server Express package is extracted the first screen is displayed.



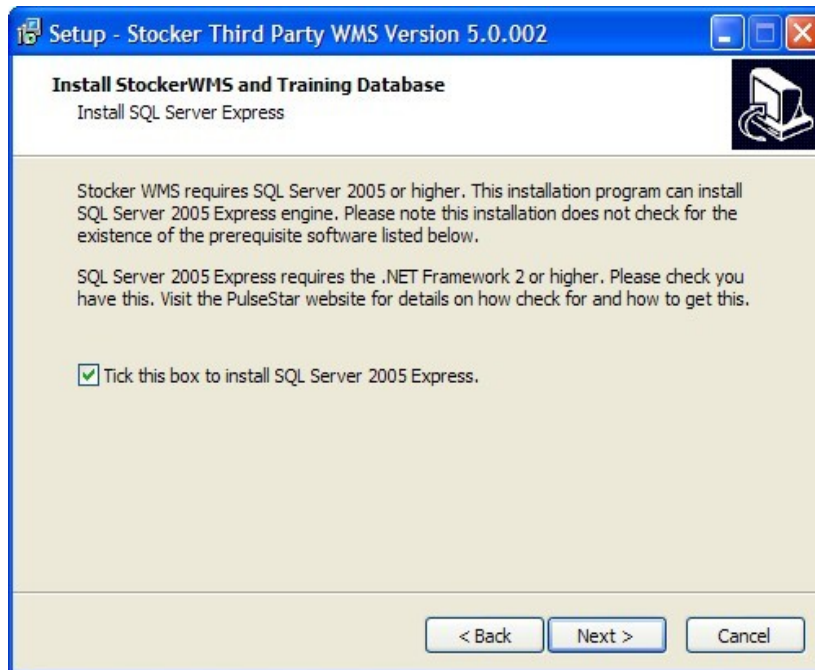
Page 1 – Opening Introduction Window

Press the next button and the Stocker WMS licence window is displayed.



Page 2 – Stocker WMS Licence

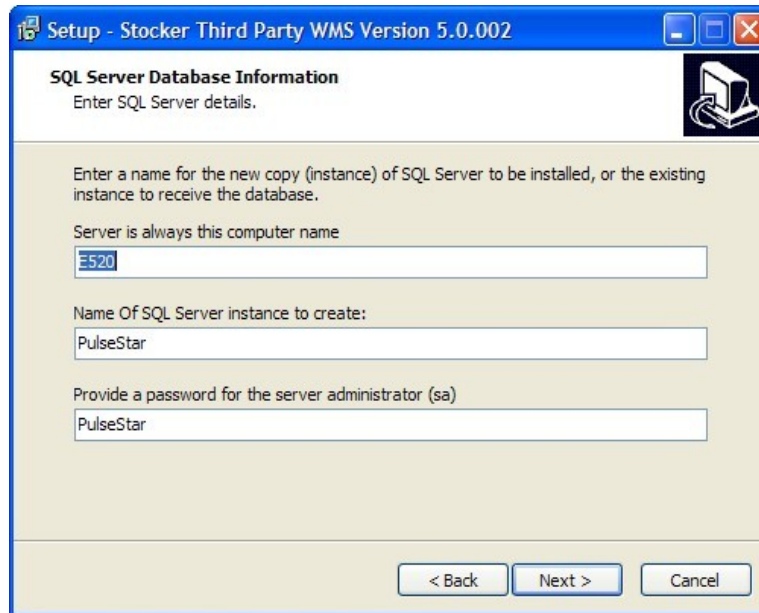
To continue you must accept the licence terms and press the next button.



Page 3 – Installation Type

After accepting the licence, you are asked if you wish to install SQL Server Express. You are also informed of the software prerequisites which must already be installed on the computer - before you can install SQL Server Express. To see how you can check if the prerequisite software is present on the computer see the *Software Prerequisites* section above. If you attempt to install SQL Server Express without the prerequisite software installed - the installation will fail.

After you have confirmed you have the prerequisite software tick the check-box to install SQL Server Express and press the next button.



Page 4 – Define SQL Server Instance

When you install SQL Server, you install an instance or 'copy' of SQL Server. This is much the same as running two copies or instances of the same Windows program such as IE.

Each instance of SQL Server can hold its own set of databases. This does not mean you have to install two instances of SQL Server if you wish to install both the Stocker Owner and Third Party systems. Only one instance/copy of SQL Server Express need be installed and the databases for both systems can be held in the same instance. This screen, however, allows for the eventuality you may want to create two instances.

Remember the instance name you provide here. This server and instance name will have to be provided when installing Stocker on other computers. This computer (a server after this install) and instance name is used to provide access across computers. They tell other computers where the database is stored

Just as you can define one or more users having access to a computer, in SQL Server you can also define one or more users having access to SQL Server. These users exist within SQL Server.

One user automatically created in SQL Server, during this install, is the administrator. It has a user name sa. You must provide a password for this administrator and that password must be at least 8 characters long. Let's look at completing the entries on this screen.

Server

The server is always the name of the computer on which you are installing SQL Server Express. You cannot change the name of the server entered by the installer. This entry is included for possible future use. Currently you must run this installer on the computer to hold SQL Server Express.

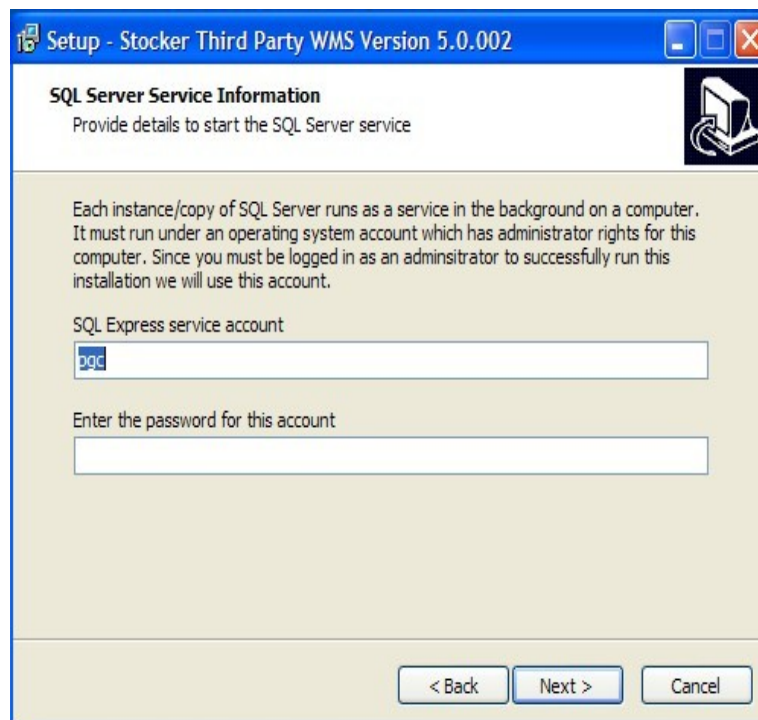
Instance

The installer provides the instance name of PulseStar. SQL Server Express uses the default name SQLEXPRESS which you might prefer. You cannot use an instance name which already exist.

Password

This is a password for the automatically created administrator account in SQL Server – the user sa. The installer suggests the password PulseStar. It is recommended you choose your own memorable password which must be at least 8 characters long.

After you have completed the entries press the next button. The following screen is only displayed if you have chosen to install SQL Server Express.



Page 5 – Define SQL Server Service

After SQL Server is installed, SQL Server – that part which accesses your data – runs as a service. A service is a program just like any other except it runs in the background on the computer. The service must:

- Start automatically when the computer starts.
- Have sufficient rights/privileges to create the physical files to hold the databases

When a computer user runs a program, the program is given all the rights and privileges of that user. These rights and privileges are defined against your Windows XP/7 account. We want the SQL Server service to have all the rights of a Windows XP/7 administrator so we can be sure it has sufficient rights and privileges to, for example, create the physical files to hold the databases. One of the primary reasons the installer can fail is because the SQL Server service has insufficient privileges to perform all necessary tasks.

This screen defines the XP/Windows7 etc. operating system user account to be assigned to the SQL Server service when it starts. Since you must be logged into the computer as an administrator to install SQL Server Express, the installation program chooses the currently logged in user. You must now enter the password for the currently logged in user.

If you are not logged in as an administrator log out and log back in as an administrator before continuing.

If you enter an incorrect password the SQL Server service will later fail to start and this installer will fail to create and install Stoker's training database. You will have to perform the following procedure and then re-run this installer deselecting the option to install SQL Server Express.

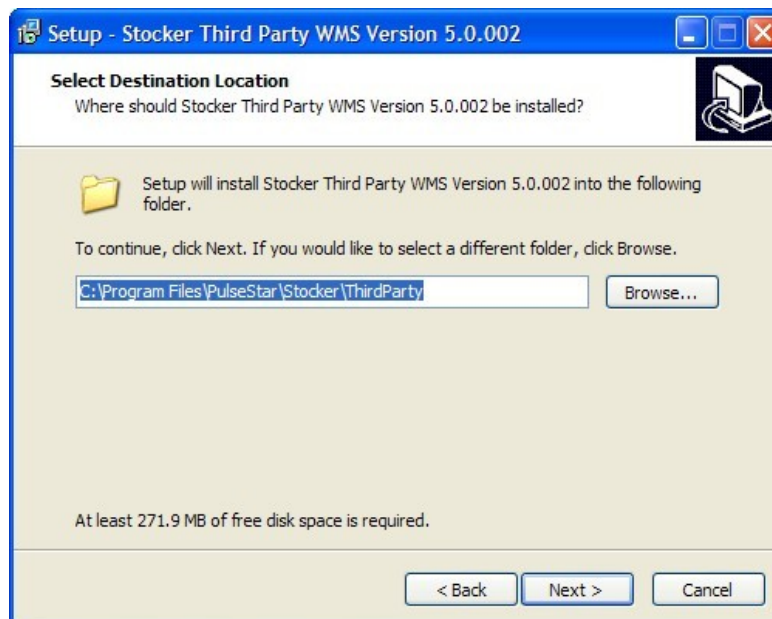
*To correct an incorrectly configured SQL Server service go to
Control Panel->Administrative Tools->Services*

Select the SQL Server service (it will have the instance name you provided), right click and select properties. Select the Log On tab. Change the log on as account and make sure the account is an administrator. Return to the General tab and start the service.

This completes all the information this installer requires to install SQL Server Express. If you have used the default values provided by the installer then all you need have entered was the password for the currently logged in user.

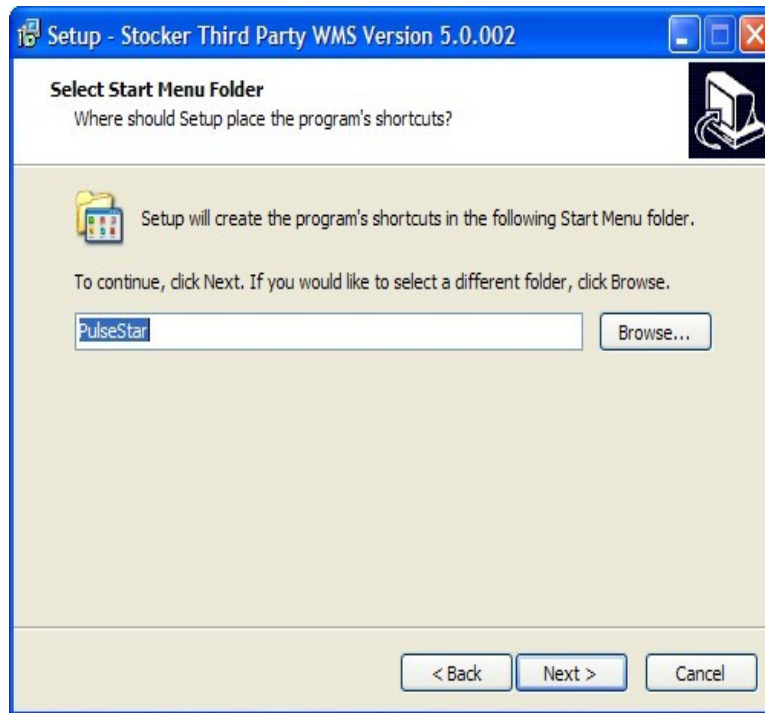
The remainder of the installation follows standard procedures for installing programs on Windows systems.

The next screen asks where you want to install Stoker.



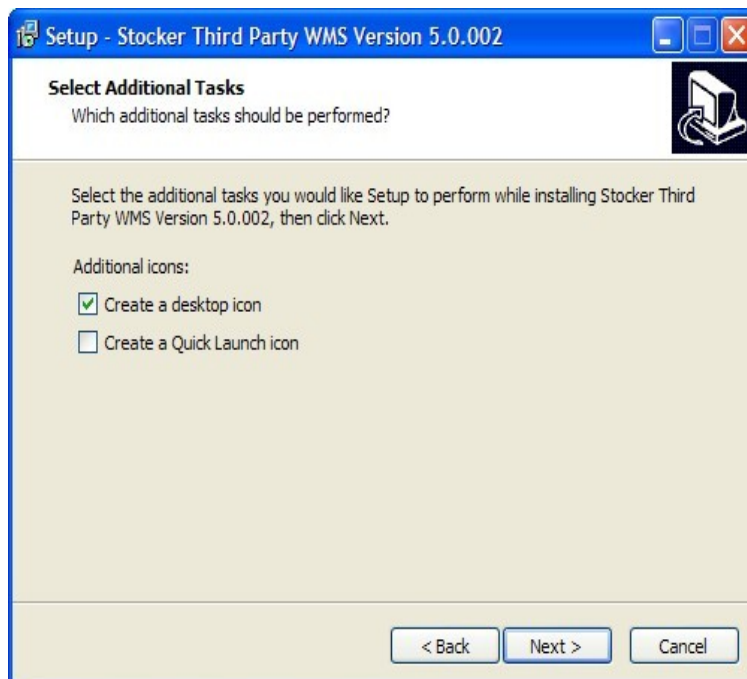
Page 6 – Define Installation Folder for Stoker

It is recommended to use the default location and just press the next button to display a screen asking where, on the Start Menu, you want access to Stoker to be listed.



Page 7 – Define Installation Folder for Stocker

Again it is probable you need only press the next button to display the easy access options screen.



Page 8 – Select Easy Access Options

Make your selections, press next, and the final *Ready to install* dialog is displayed.



Page 9 – Ready To Install

After you press the *Install* button the installation starts and installs all components in the following sequence:

- First Stocker is installed and configured.
- The SQL Server package has already been extracted from the installer into the temporary folder on your computer. Now the SQL Server Express installer, itself, is decompressed.
- The SQL Server Express installer is called and SQL Server Express installed. During the installation the SQL Express installer displays its progress.
- Stocker's training database is created in SQL Server Express
- The sample training database is extracted from the installer and restored into SQL Server Express.

After the restore of the training database, the *Installation Complete* screen should be displayed asking you to press the *Finish* button to complete the installation.

You should not need to restart the computer to start using Stocker. However, if you find you cannot access Stocker you have two options

- Restart the service. To do this go to...

Control Panel->Administrative Tools->Services

Select the SQL Server service (it will have the instance name you provided), right click and select properties. Select the Log On tab. Change the log on as account and make sure the account is an administrator. Return to the General tab and start the service.

- Restart the computer whereby the service is started automatically.

It was noticed on one occasion after running this installation Stocker could be accessed immediately. The following day, however, after turning on the computer, Stocker could not be accessed. Going to the service it was set to start automatically but it had not started.

The service was started and no further trouble ensued – even after turning the computer off again. A mystery but just shows if you have a problem the first call is to check the service is running.

Installing Stocker WMS and Restoring the Training Database

This installation program can be run to omit the installation of SQL Server Express. Generally it is recommended this installation program is only used once to install SQL Server Express.

Once SQL Server Express has been successfully installed you should use one of the other Stocker WMS installers which are better configured for installing only Stocker and/or Stocker's databases. Installers without the option to install SQL Server Express are also much smaller in size being a mere 5MB in size as opposed to 250MB+.

However, if, for example, page 5 was completed incorrectly, the SQL Server Express service could be incorrectly configured. In this case the installer could fail to create Stocker's training database.

In this situation you would need to correct the service configuration and re-run this installer. Since the actual install of SQL Server had finished successfully you would not want to re-install SQL Server Express.

All you want to do now is install the training database. Note Stocker would be re-installed again but this is quick and not a problem. However, a separate installer would offer the preferred options to install Stocker and/or the training database.

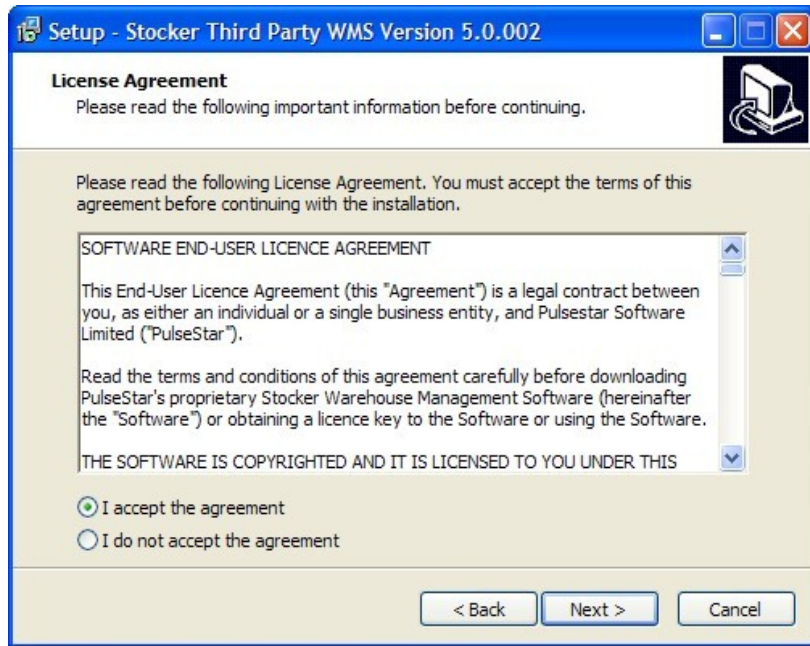
Running The Installer

Launch the setup program. There may be a small delay after you launch the program and before the initial screen is displayed. This is not a problem. The delay is because the first thing the installer does is extract the compressed SQL Server Express package from the installer and into a temporary folder. Once the SQL Server Express package is extracted the first screen is displayed.



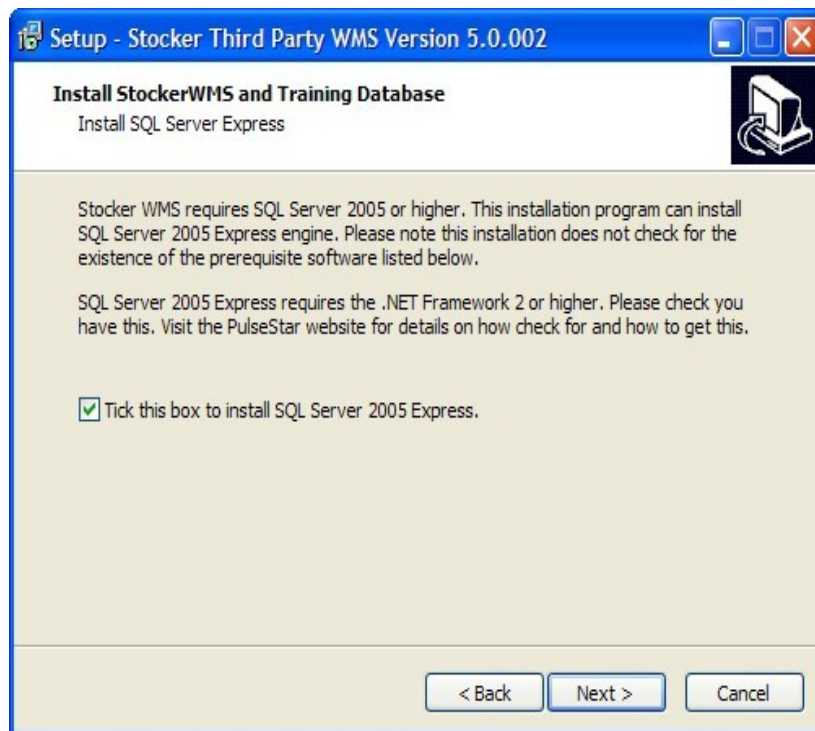
Page 1 – Opening Introduction Window

Press the next button and the Stocker WMS licence window is displayed.



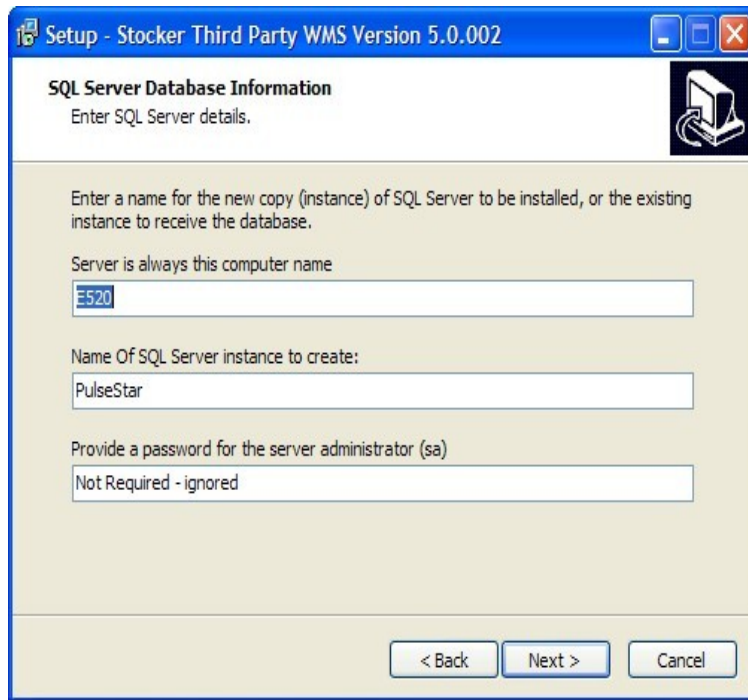
Page 2 – Stocker WMS Licence

To continue you must accept the licence terms and press the next button.



Page 3 – Installation Type

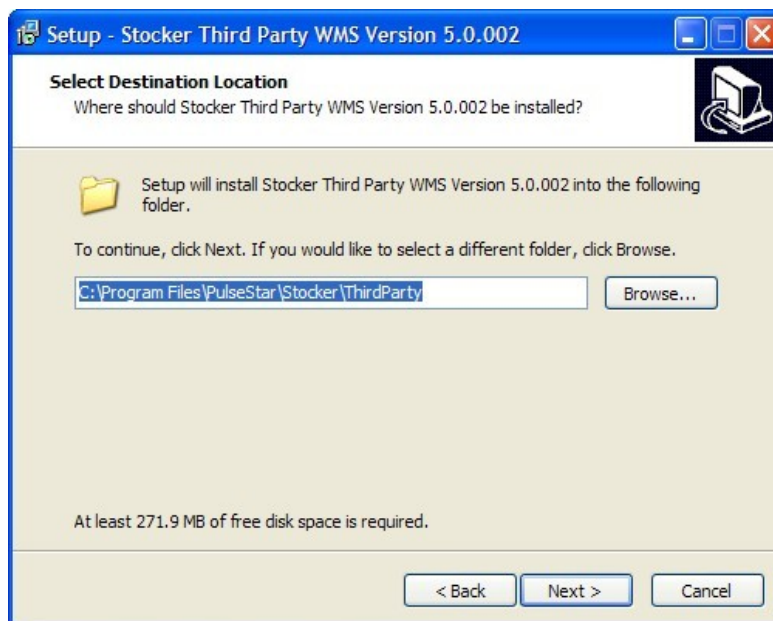
After accepting the licence you are asked if you wish to install SQL Server Express. Remove the tick from the check-box to deselect the option to install SQL Server Express and press the next button.



Page 4 – Provide SQL Server Instance

Provide the server and instance name to receive the training database. The instance provided must already exist. The password is not required and is ignored.

You are now taken to screen 6 and proceed as outlined when installing SQL Server Express.



Page 6 – Define Installation Folder for Stoker

After the installation program finishes you should have reinstalled Stoker WMS and

restored the database from the installation program.

Components are installed in the following sequence:

- First Stocker is installed and configured.
- Stocker's training database is created - if it does not already exist in SQL Server Express
- The sample training database is extracted from the installer and restored into SQL Server Express.

After the restore of the training database, the *Installation Complete* screen should be displayed asking you to press the *Finish* button to complete the installation.